



ZOLISSET

(PTY) LTD

COMPANY PROFILE

2025/26



About Us

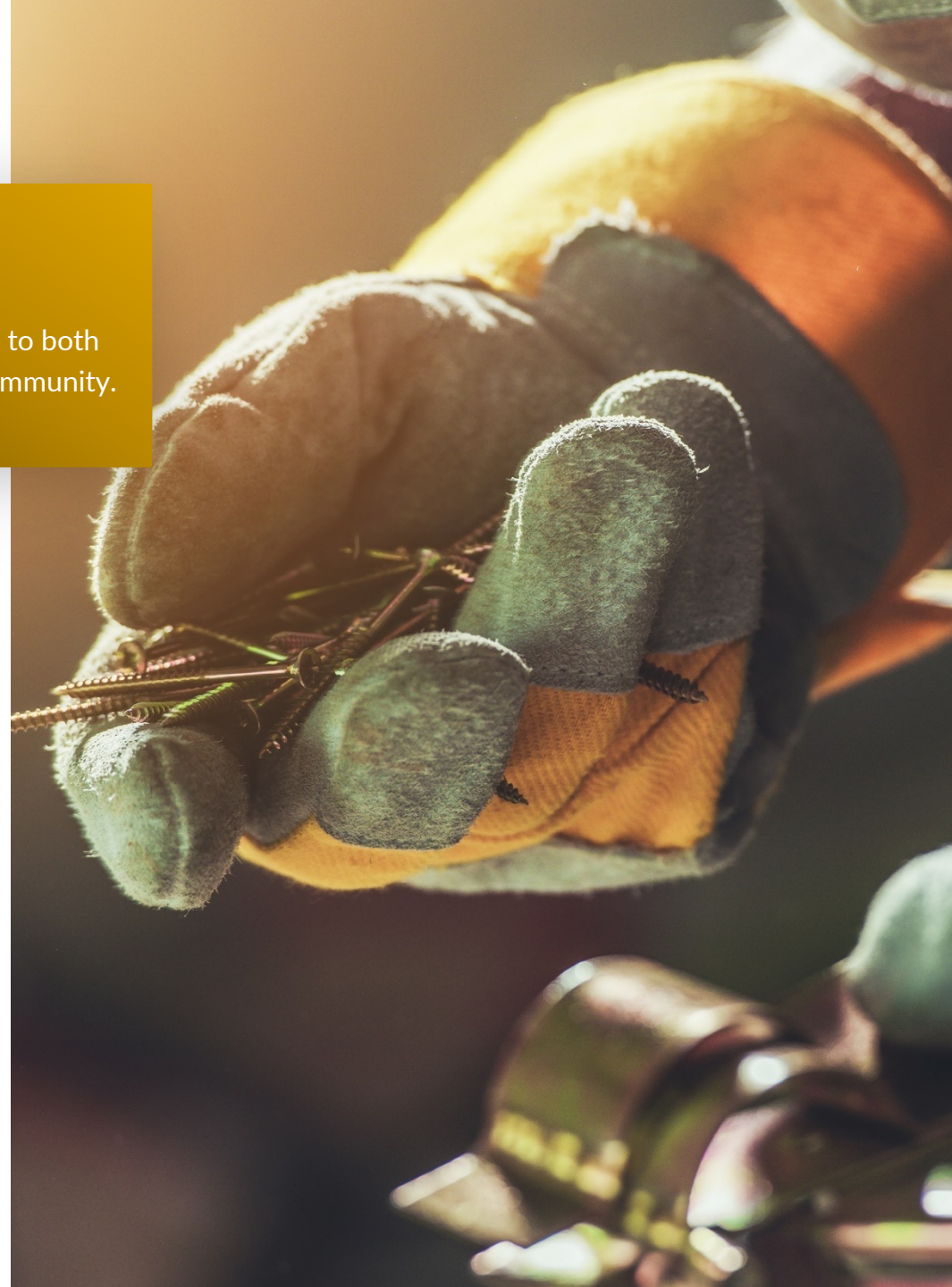
Building the bridge to Sustainable Development.

Zoliset (Pty) Ltd was established in 2015 when the Director realised that there is demand for Black Owned companies that will support and partner with Government to bring service delivery to the people. The company focuses in facilitating Sustainable Integrated Urban and Rural Development with measurable impact on the reduction of poverty.

However, the abovementioned were the primary activities when the company was newly registered. In recent times, the company also focuses on Supply and delivery of items required by the end user.

7+

years of service to both
corporate and community.





Core Values

At the heart of our practice are our core values which guide and inform all that we do.



MISSION

To partner clients, by using our proactive management skills to timorously execute projects in order to optimize value for all stakeholders.



VISION

To develop an exemplary Building and Civil Engineering Construction in South Africa and SADC region, rooted in industry respect, rigorous service excellence, and to be the contractor of choice for both construction and supply related projects.



VALUES

Commitment to maintain the highest level of safety codes and training, valuing human life and wellness, understanding that our people have responsibility to themselves and their dependants. "Safety is non-negotiable".



SUPPLY AND DELIVERY

Petroleum Fuel

PPE

Nuts and Bolts

Ration Packs

Sanitation chemicals

Office Stationery

Porcelain Insulators

Welding Rods

Specialized Storage bags



BUILDING PROJECTS

Associated Works

Community Halls and Schools

Sport field and Facilities



CIVIL ENGINEERING

Road & earthworks

Water Supply Schemes

Sanitation

Water Meter Installation and

Mechanical Plant Hire



MINING

Loading and hauling

Logistics



MECHANICAL PLANT HIRE

TLB's

Water Tankers

100%

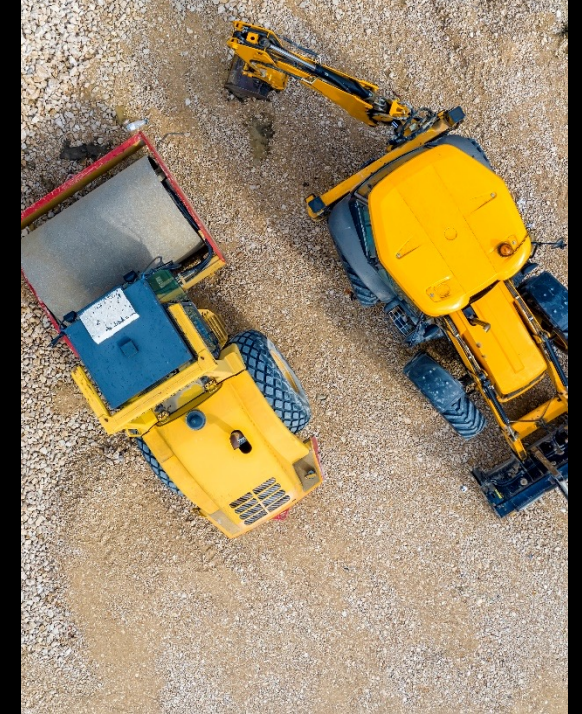
Overall successful
completion rate on
projects to date.



Services

Engineering excellence.

Zoliset is a solutions-based company and as such operates in strategic market segments to deliver rigorous excellence in service, as well as effective responses to both opportunities and challenges within its landscape.





Truck Mounted Combination Jet Suction

Combined drain cleaning and silt
clearing vacuum systems



Truck Mounted Jetting

Fully customisable, chassis-
ready jetting systems



Truck Mounted Recycling Combination

Efficacious sewer and stormwater line
cleaning systems



Truck Mounted Vacuum

High pressure vacuum systems in
your choice of build

Sewerage and Sanitation

Sewerage and Sanitation



Chemical Toilets

Mobile toilet solutions for site and occasion specific needs





Social Responsibility

And as we climb, we let the ladder down for those who come after.

A company's mandate is to ensure that its operational processes do not negatively affect the surrounding stakeholders, be it those directly involved or those not involved at all. All processes must be Environmentally safe, Economically sound while also benefiting the community at large and uplifting. We, as such, believe in sustainable development and paying it forward through various projects, being aligned with the UN SDGs.



Social Responsibility

And as we climb, we let the ladder down for those who come after.

CAUSES

Servicing under-supported communities through our organisation, our mission is rooted in the transformative power of community upliftment and the unwavering belief that access to essentials can change lives. Through our consistent school initiatives, we provide children with the tools they need to thrive - from full school uniforms and shoes to quality stationery and exercise books. These are not just supplies; they are statements of dignity, confidence, and opportunity for learners who would otherwise face barriers to education. Our commitment extends to creating supportive environments for youth to learn and grow, sowing seeds for a stronger and more equitable future.

Beyond education, our Essentials Drives support families with vital resources such as staple foods, toiletries, and warm blankets - particularly during winter and the back-to-school season. With a special focus on women, children, and youth, our efforts are driven by compassion and strategy, aiming not only to provide immediate relief but to cultivate resilience and long-term impact. At the heart of our organisation is a deep dedication to generosity that empowers, nurtures, and elevates lives.

7+

years of service to both corporate and community.



Social Responsibility

And as we climb, we let the ladder down for those who come after.

COMMITMENT

Under our foundation, we believe in building bridges to sustainable development, we mirror our approach to our work by delivering essential support school uniforms, stationery, nutritious food, and household necessities - to marginalised people who deserve dignity, support, and opportunity.

Guided by our commitment to community, environment, and economic responsibility, our programmes are designed with long-term impact in mind. Just as ZOLISSET ensures that its projects are environmentally safe, economically sound, and socially uplifting, our support work is aligned with the UN Sustainable Development Goals - paying it forward through initiatives that sow seeds of hope, equity, and resilience across generations.

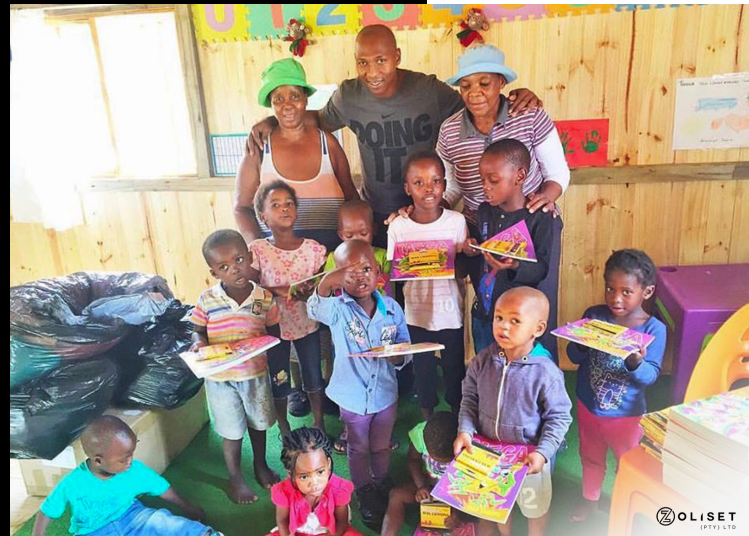
7+

years of service to both corporate and community.



Initiatives

Working with various entities over the years, we have built a strong rapport through both challenging and impactful work, driving positive change and compassion to communities most vulnerable.



Initiatives

This foundation of trust and resilience has enabled us to foster lasting partnerships, innovate across disciplines, and continually advocate for equity, dignity, and meaningful transformation where it's needed most.





Clients

A few of the clients we have had the privilege of delivering service excellence for.



Portfolio

Working with various entities over the years, we have built a strong rapport through projects both challenging and impactful. We have enjoyed being a trusted service provider and these experiences are reflected in just a few of our highlights.



Hiring of Mechanical Plant

Client: Joburg Water

Duration: from 03 Dec 2021 – Date

Description: Hiring of Mechanical plant on an as and when basis for the City of Johannesburg.

Plant type: TLB, Mobile Crane, Excavator and Roll back

Hiring of Mechanical Work

Client: MB Resources/Exxaro

Duration: From 1 Feb 2022 – Date

Description: Supplying Exxaro/MB Resources with Tipper trucks for the transportation of coal from mine to conveyor belts.

Plant type: Tipper truck



Agility

We combine
responsiveness and a
progressive spirit to deliver
exceedingly, consistently.

Portfolio



Supply and Delivery

Client: Department of Education

Duration: 10 days

Description: Supply and delivery off PPE
for the Department of education, Eastern
Cape

PPE type: 3-Ply Surgical masks

Accreditation



CIDB

CRS No.: 10090687

Grading designation:

PE 1EP, 5GB, 1SK,
7CE, 7ME



mineral resources
& energy
Department:
Mineral Resources and Energy
REPUBLIC OF SOUTH AFRICA

Fuel Petroleum
Wholesale License



Management
System
ISO 9001:2015
ISO 45001:2018

www.tuv.com
ID 9000027697



ISO 9001; ISO
45001
TUV Rheinland
Inspection
Reg no.:
01 100 928 920



4000006061



South African Institute of
Occupational Safety and Health

SAIOSH Certificate



SESSA Member

Murray Roberts Vendor no.: 341625

Gauteng vendor no.: 1100131016

EMPOWERMENT

ZOLISSET is 100% Black Owned, holding a B-BBEE Status Level 1 Contributor.

DIRECTOR(S): Xolisile Guqaza | HDI STATUS: Black Male | %OWNERSHIP:

100% Ownership

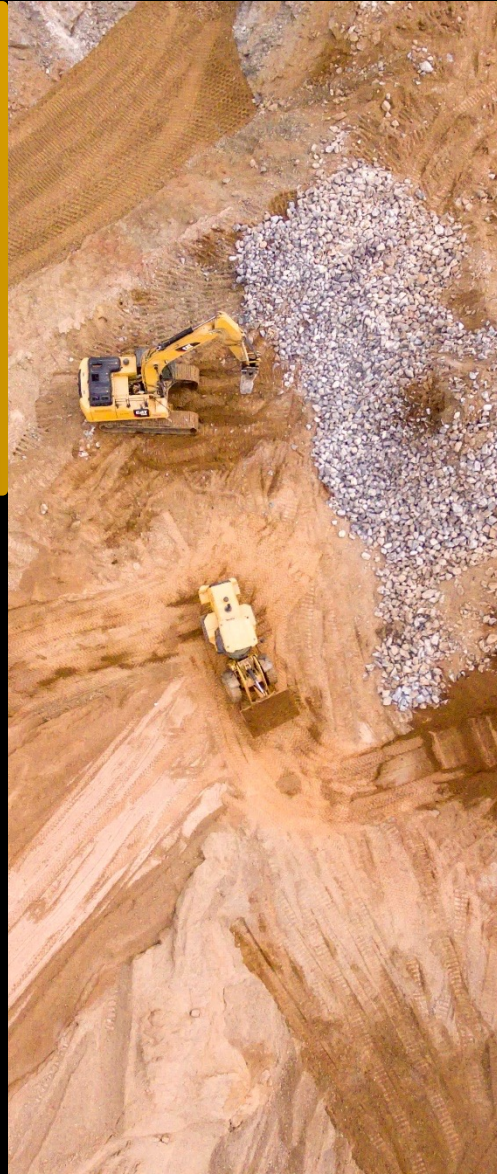




Quality

Underpinning everything we do is this commitment to providing quality services.

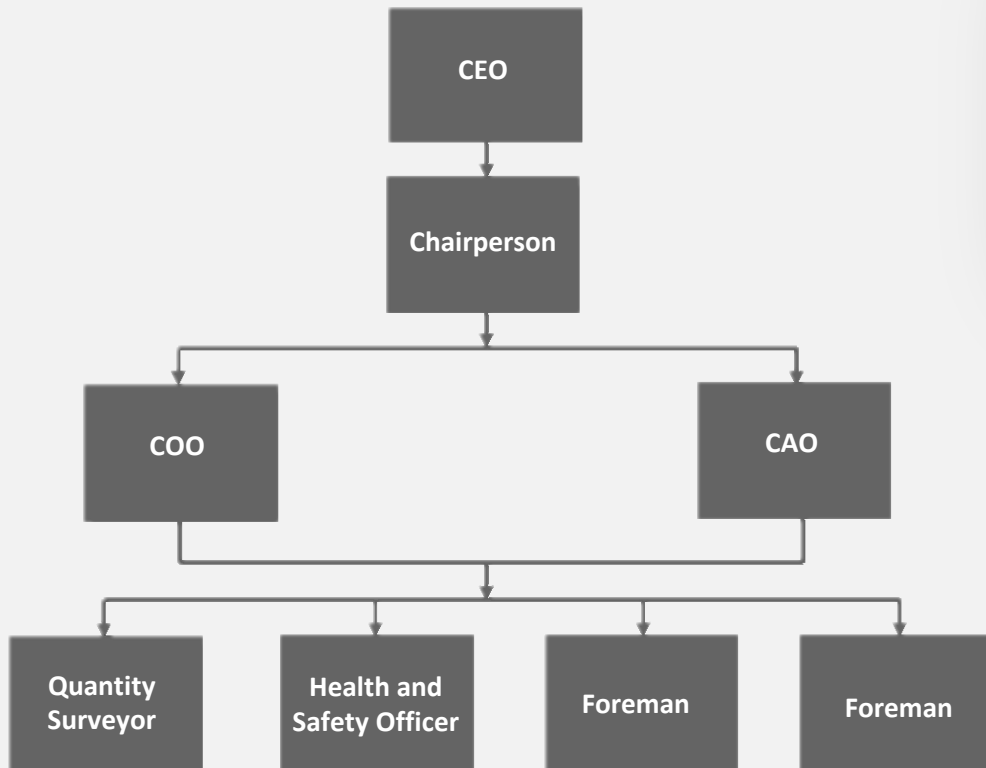
Zoliset (Pty) LTD. strives to be the best contractor in the industry. Through the use of these guiding principles, everyone in Zoliset (Pty) Ltd is accountable for fully satisfying our customers by meeting or exceeding their needs and expectations with best-in-class solutions and services. Our goal is 100% Client satisfaction 100% of the time.



Quality policy

Our quality policy is defined and strongly driven by the following management principles and behaviours:

- Build a mutually profitable relationship with our Clients, ensuring their long-term success, through the understanding of their needs and the needs of their customers as well.
- Achieve our commitments for quality, cost, and schedule
- Enhance the systematic research and use of best preventive practices at all levels and ensure reliable risk management
- Drive continual improvement and innovation based upon efficient business processes, well-defined measurements, best practices, and customer surveys
- Develop staff competencies, creativity, empowerment and accountability through appropriate development programs and show strong management involvement and commitment



Team

A snapshot of the core team in our expanding company.

Operational Structure

Engineering excellence.



Company Details

LEGAL STATUS

Provides services to enhance the quality of the Rural Communities. Its legal status is: Registered as a **Private Company**

COMPANY REGISTRATION DETAILS

REGISTERED NAME: ZOLISET
(PTY) LTD
REGISTRATION NUMBER:
2015/279079/07
VAT NUMBER: 4130292370

COMPANY CONTACT DETAILS

ADDRESS: 4367 Barbete Crescent, The Villas 2, Waterfall Country Estate, Midrand, 1685
HEAD OFFICE: +27 (0)87 265 3516
CELL: +27 (0)73 373 8024
FACSMILE: +27 (0)86 694 4024
EMAIL: xolisile@zoliset.co.za
xolisile.guqaza@gmail.com



ZOLISSET

(PTY) LTD